



BR1 Mini

Durable. Unbeatable Price Performance.

- 5G
- 300 Mbps
- GE
- Power
- GPS
- Class 1 Division 2
- CLASSIFIED UL US
- TAA COMPLIANT

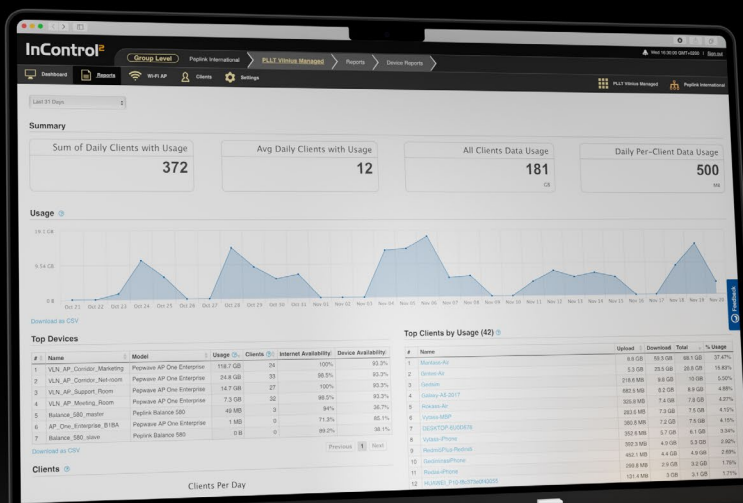


Just one remarkable device

Engineered with the highest quality build in mind. Sleek outside, yet ruggedized inside, this device has been built to withstand whatever deployment scenario thrown at it.

Stay in touch with InTouch

InTouch extends your reach to third party devices connected to the BR1 Mini. Remotely view, configure or troubleshoot third party devices, all within the InControl2 environment, eliminating the need for a separate and costly OOBM infrastructure.



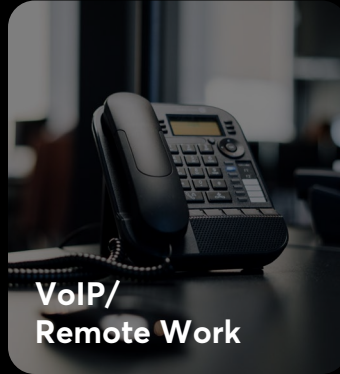
Manage with confidence

Control the BR1 Mini using InControl2 cloud-based endpoint management system. Generate useful reports and push configurations, as you remotely access any Peplink device with ease.

InControl²



Use Cases



Why BR1 Mini?

Remote Access to Third Party Device Interface (**InTouch**)

Other Solutions

will require network engineers to maintain and be costly



Our BR1 Mini

enables access to linked devices through a single platform

Seamless Connection Transfer Without Interruption (**Hot Failover**)

Other Solutions

will experience network interruptions



Our BR1 Mini

provides seamless network connectivity

Option to Enable Additional Features (**Optional Subscription**)

Other Solutions

require licenses for features or otherwise lock the device



Our BR1 Mini

offers an optional package inclusive of several features

Improve your Video and Collaboration (**WAN Smoothing**)

Other Solutions

may experience jitter and delays



Our BR1 Mini

improves the quality of real-time applications such as Zoom / Teams

Private LTE Network Availability (**CAT-7**)

Other Solutions

operate within limited bands that don't have access to private LTE



Our BR1 Mini

can operate within LTE bands dedicated to private LTE networks

Privately Hosted Management Platform (**On-Premise Network**)

Other Solutions

are managed only through cloud-based platforms



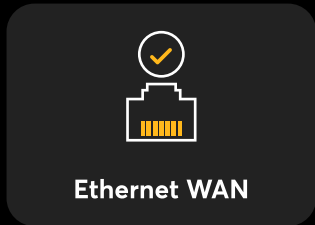
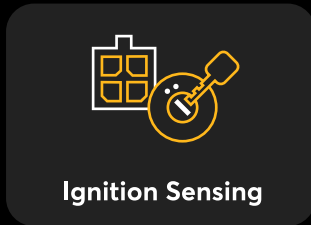
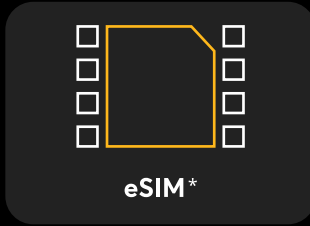
Our BR1 Mini

can be managed through a platform hosted on private server hardware



Now Available on PrimeCare

Launching the BR1 Mini on PrimeCare[^], giving the device prime access to InControl2, eSIM compatibilities*, increased VPN throughput, more PepVPN peers, WAN Activation, Wi-Fi WAN, Hot Failover, Smoothing, Bandwidth Bonding* and standard warranty & support.



* Available with Firmware 8.4.0 or above.

[^] With Firmware 8.3.1, PrimeCare includes all feature pack features (WAN Activation, Wi-Fi WAN, Hot Failover & WAN Smoothing).

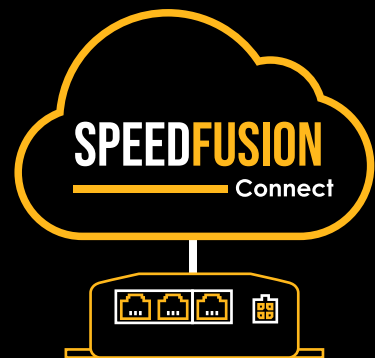
Plug and play, anyone?

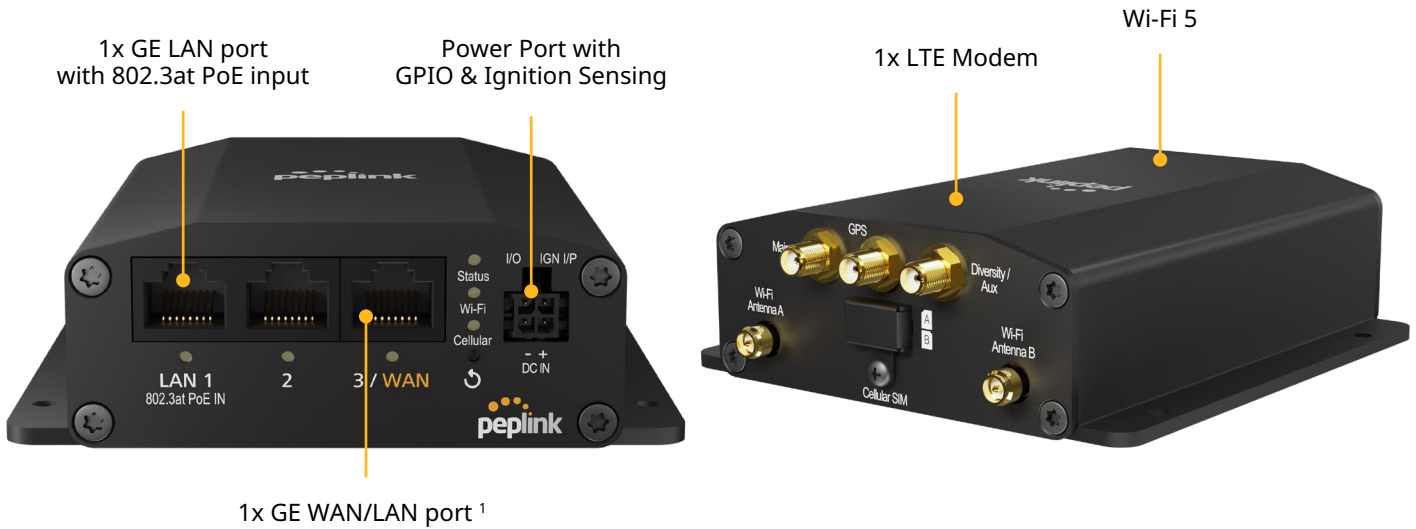
SpeedFusion Connect* services makes the BR1 Mini the ultimate plug-and-play device. Power up, switch on, and get connected. SpeedFusion Connect also works with Peplink technologies such as Hot Failover[^], ensuring reliable connectivity is accessible at all times.

[Subscribe to SpeedFusion Connect Services](#)

* SpeedFusion Connect is available in select countries and regions. [Learn more.](#)

[^] Feature Pack is required to utilise the benefits of Peplink technology and services.





Specifications

WAN Interface	1x 10/100/1000M Ethernet ¹ 1x Embedded Cellular Modem with Redundant SIM Slots	Antenna Connectors	2x SMA Cellular Antenna Connectors 2x RP-SMA Wi-Fi Antenna Connectors 1x SMA GPS Antenna Connector
LAN Interface	2x 10/100/1000M Ethernet	Power Input	Power Port: 10V – 30V DC AC Adapter: AC Input 100V–240V / DC Output 12V Power over Ethernet 802.3at
Wi-Fi Interface	Simultaneous Dual-Band (2.4GHz / 5GHz) Wi-Fi 5, 2X2 MIMO Wi-Fi WAN ¹ and/or AP	Power Consumption	13W (nominal), 18W (max.)
SpeedFusion features	Hot Failover ¹ / Smoothing ¹ / Bandwidth Bonding ^{1 2}	Dimension	5.0 x 4.2 x 1.4 inches / 125.7 x 107 x 35 mm
Number of SpeedFusion VPN Peers	2 / 5 ³	Weight	0.95 pounds / 430 grams
Feature	GPIO, Ignition Sensing	Operating Temperature	-40° – 149°F / -40° – 65°C
Router Throughput	300Mbps	Humidity	15% – 95% (non-condensing)
SpeedFusion VPN Throughput - No Encryption - 256-bit AES	80Mbps 60Mbps	Certifications	FCC, CE, RoHS UL 121201 (Class I and Division 2) E-Mark (Motor Vehicle) EN 61373 Shock and Vibration Resistance EN 50155 Railway Applications EN 61000 Electromagnetic Compatibility
Recommended Users	1-60	Package Content	1x BR1 Mini 2x LTE Antennas (ACW-235) 2x Dual Band Wi-Fi Antennas (ACW-342) 1x GPS Active Antenna (ACW-232) 1x 12V 2A 4pin Power Supply (ACW-632)
Cellular Data Rate ⁴ (Downlink/Uplink)	CAT-7: 300 Mbps/150 Mbps CAT-6: 300 Mbps/50 Mbps CAT-4: 150 Mbps/50 Mbps	Package Content for MAX-BR1-MINI-LTEA-B-T-JPC-PRM	1x BR1 Mini 2x iAN067 LTE Antennas 2x Dual Band Wi-Fi Antennas (ACW-342) 1x GPS Active Antenna (ACW-232)
		SIM Options	Nano-SIM (4FF) Peplink eSIM ⁵ BYO eSIM (2 profiles) ^{2 5} RemoteSIM from SIM Injector ⁶ FusionSIM ⁶
		Warranty	1-Year Limited Warranty

¹ Available with PrimeCare subscription or a feature pack add-on license.

² Available with Firmware 8.4.0 or above.

³ Requires a PrimeCare subscription, complimentary for the first year.

⁴ Maximum theoretical data rate.

⁵ Models with selected SKU support eSIM. Details can be found [here](#).

⁶ RemoteSIM and FusionSIM compatible with hardware version 4 or above.

Specifications are subject to change without notice.

Ordering Information

Product Code	Regions [^]	LTE Bands	3G Bands
MAX-BR1-MINI-LTEA-US-T-PRM Embedded Modem(s): 1x CAT-7	North America* *US Carrier Certifications: AT&T, T-Mobile, Verizon, FirstNet	B2, B4, B5, B7, B12, B13, B14, B25, B26, B41, B42, B43, B48, B66, B71	HSPA+: B2, B4, B5
MAX-BR1-MINI-LTEA-US-DC-T-PRM Embedded Modem(s): 1x CAT-7	North America* *US Carrier Certifications: AT&T, T-Mobile, Verizon, FirstNet	B2, B4, B5, B7, B12, B13, B14, B25, B26, B41, B42, B43, B48, B66, B71	HSPA+: B2, B4, B5
MAX-BR1-MINI-LTEA-E-T-PRM Embedded Modem(s): 1x CAT-7	APAC, EMEA	B1, B3, B7, B8, B20, B28, B32, B38, B40, B41, B42, B43	HSPA+/WCDMA: B1, B5, B8
MAX-BR1-MINI-LTEA-B-T-PRM Embedded Modem(s): 1x CAT-6	APAC, EMEA	B1, B2, B3, B4, B5, B7, B8, B12, B13, B14, B17, B18, B19, B20, B25, B26, B28, B29, B30, B38, B39, B40, B41, B42, B43, B48, B66, B71	HSPA+/WCDMA: B1, B2, B4, B5, B6, B8, B9, B19
MAX-BR1-MINI-LTEA-B-T-JPC-PRM Embedded Modem(s): 1x CAT-6	Japan	B1, B2, B3, B4, B5, B7, B8, B12, B13, B14, B17, B18, B19, B20, B25, B26, B28, B29, B30, B38, B39, B40, B41, B42, B43, B48, B66, B71	HSPA+/WCDMA: B1, B2, B4, B5, B6, B8, B9, B19
MAX-BR1-MINI-LTE-US-T-PRM Embedded Modem(s): 1x CAT-4	North America* *US Carrier Certifications: AT&T, T-Mobile, Verizon, FirstNet	B2, B4, B5, B12, B13, B14, B66, B71	WCDMA/HSPA+/DC-HSPA+: B2, B5
MAX-BR1-MINI-LTE-MX-T-PRM Embedded Modem(s): 1x CAT-4	APAC, Latin America, Australia	B1, B2, B3, B4, B5, B7, B8, B28, B40	WCDMA/HSPA+/DC-HSPA+: B1, B2, B5, B8
MAX-BR1-MINI-LTE-E-T-PRM Embedded Modem(s): 1x CAT-4	APAC, EMEA	B1, B3, B5, B7, B8, B20, B38, B40, B41	WCDMA/HSPA+/DC-HSPA+: B1, B5, B8

[^] Regions are for reference only. For specific location compatibility, please refer to the bands.

Featured Add-on

Product Code	Description
PRM-A-1Y / PCP-A-1Y	PrimeCare A / PrimeCare+ A (1-Year)
PRM-A-2Y / PCP-A-2Y	PrimeCare A / PrimeCare+ A (2-Year)
PRM-A-4Y / PCP-A-4Y	PrimeCare A / PrimeCare+ A (4-Year)
MAX-BR1-MINI-LC-FP	Feature pack for BR1 Mini enables Ethernet WAN, Wi-Fi WAN, Hot Failover, Smoothing, Bandwidth Bonding
MAX-BR1-MINI-BD-FP-2Y	MAX BR1 Mini Bundle Offer - 2 year PrimeCare extension & complimentary feature pack
MAX-BR1-MINI-BD-FP-4Y	MAX BR1 Mini Bundle Offer - 4 year PrimeCare extension & complimentary feature pack
MAX-BR1-MINI-BD-FP-PLUS-2Y	MAX BR1 Mini Bundle Offer - 2 year PrimeCare+ extension & complimentary feature pack
MAX-BR1-MINI-BD-FP-PLUS-4Y	MAX BR1 Mini Bundle Offer - 4 year PrimeCare+ extension & complimentary feature pack
ANT-MB-22G-S-B-6	Mobility 22G - 2x2 MIMO Cellular and Wi-Fi Antenna System with GPS (Black)
ANT-MB-22G-S-W-6	Mobility 22G - 2x2 MIMO Cellular and Wi-Fi Antenna System with GPS (White)
ANT-SLM-22G-S-B-6	Slim 22G - 2x2 MIMO Cellular and Wi-Fi Antenna System with GPS (Black)
ACW-634	10ft/3m DC Power Cable
ACW-643	Vehicle Cigarette to Molex Power Cable
ACW-791	Peplink 4-Pin Microfit to USB-C Power Cable
ACW-DIN-BR1-MINI	DIN Rail mount kit